



BIMming for a Better World: Sustainability, AI, and Cost-Saving Adventures

Fernando Valderrama

We are RIB

Choose a global leader in software technology, fit-for-purpose for the AEC industry



WE ARE INDUSTRY EXPERTS

60 years

of innovative solutions
built on AEC industry
experience

WE ARE GLOCAL

100+ countries

combining local
expertise with our
global advantage

WE ARE USER CENTRIC

550k+ users

who remain at the
center of everything
we do

WE ARE OUR PEOPLE

2,600+ talents

across the globe that
have walked in your
shoes

WE ARE **Schneider** Electric

12 years

as one of the most
sustainable companies
in the world*

*Recognized by Corporate Knights' Global 100 for the 12th year.

PRESTO IN ONE SLIDE

Presto is a software for:

Cost, time and execution management

Integrated with **CAD**, **IFC** and **Revit**,

Considering the requirements of **design** professionals, **project managers** and **construction** companies,

Supporting **sustainability** and digital transformation.

In the **design**, **planning** and **execution** stages,

For **building** and **civil works**,

Leader in **Spain** and many **Latin American** countries,

3D ► Presto 5D ► 6D ► 4D ► 3D

SUSTAINABILITY

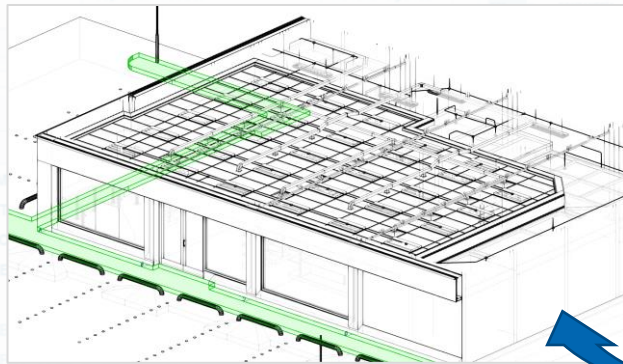
The **priced BoQ** is the basis for **GWP** (CO2) footprint:

- **Quantified** components and resources used in the project: $\Sigma \text{ QTTY} \times \text{GWP}$
- **Unit cost**, needed to compare **alternatives**

The BoQ covers **100% of A+C** LCA stages

FIE **BDC** **EC3**

+ **Internet** pages,
Excel files,
proprietary **APIs**,
PDFs...



OpenBIM Tour

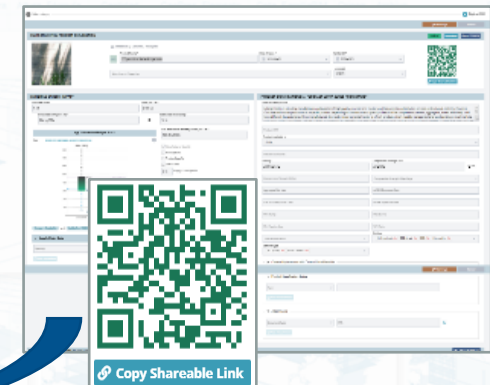
BIM Model
Export to IFC

Selectively
import
properties



Import IFC
Perform QTO
GWP from EC3

Export
properties
to IFC



AI: AUTOMATIC CLASSIFICATION

"The first step will not take you to the goal,
but it will force you out of where you are"

Assist professionals with **routine** tasks without trying to
replace their **know-how**

Professionals must deal with several classification systems:

- The most useful in **design** stage
- The choice of the **cost responsible**
- Specifications from **owner**
- Requirements from **BIM manager**

What we do:

Classify any **element** in any **classification system** in any
language



COST SAVINGS: PREDICTIVE PURCHASING PLANNING

Avintia consolidates the data from all the bids it has submitted, assigning a probability factor, to **forecast** the purchases of the main supplies.

With this data, it negotiates **framework agreements**, obtaining substantial **savings**.

This requires **interoperability**:

BIM + **Presto** + Microsoft **Project** + Procura
+ smart **processes**, and motivated **professionals**.

BIM and IFC are components of a much larger goal:
the **rationalization** of construction



Avintia

SPAIN BIM MANDATE IN PRESTO





Building Better Together

fernando.valderrama@rib-software.com

www.rib-software.es